

GDF

发电机组 Generating sets



GDF 广州柴油机厂股份有限公司
GUANGZHOU DIESEL ENGINE FACTORY CO.,LTD

远见卓识 开启未来 Foresighted and judicious judgement, driving the future



Guangzhou Diesel Engine Factory Co., Ltd. (Formerly known as GuangZhou Diesel Engine Factory) known as Hip Tung Wo Machinery Factory established in 1911, who made the first diesel engine in China in 1915. Now, the company has become the largest company manufacturing diesel engines in the South China with the capacity of mass production of diesel engines. The company manufactures mainly series 230, 320, G32 and KU30A medium-speed with output from 810kW~6000kW. This diesel engine has many features such as stable operation and high reliability, sufficient margin power, low fuel consumption, low emission, low running cost and easy to maintain thus warmly received by users. The company has obtained the CCS, BV, GL, NK and LR Factory Authorization and Certificates and has established a strict quality management system. The exhaust emission of the medium-speed diesel engines manufactured by Guangzhou Diesel Engine Factory Co., Ltd. is in

conformity with the NOx emission standard issued by IMO. The medium-speed diesel engines from Guangzhou Diesel Engine Factory Co., Ltd. with the power taken out from the both ends of the crankshaft are widely used as the marine main or auxiliary engine of Ro-Ro vehicle ships and naval ships and can be equipped with remote-controlled device, thrusting bearings and all kinds of coupling and gearboxes according to the requirements from users. Furthermore, we can supply steering, central controlling, monitoring and engine-side operating consoles with a good performance, a complete alarms, easy operation and capable of changeover each other. Our company also manufactures generating sets with the output of 700kW to 4180kW. These generating sets are equipped with the diesel engine from the company as their motive machines and the first-rated generator and electrical device with the many features such as low fuel oil

consumption, low nose level, easy parallel to power grids and capable of long term operation with a good performance, and the generating sets equipped with the emergency device can be automated for supply of power thus are ideal stand-by or emergency power equipment for power stations and plants etc. All medium-speed diesel engines of 320, 230, G32 and KU30A series and generating sets from our company can be operated on heavy fuel oil of 180cSt/50°C, 380cSt/50°C or of 1500 sec. Red. No. 1/100°F; 3500 sec. Red. No. 1/100°F. The G32 medium-speed marine diesel engine is a new product developed by Guangzhou Diesel Engine Factory Co., Ltd. in cooperation with the 711 Research Institute of CSSC in recent years. It has advanced technology and wonderful performance keeping ahead in the home market and has reached the level of the like products in the word in the turn of this century.

历史悠久的实力雄厚

广州柴油机厂股份有限公司（原广州柴油机厂）是中国柴油机制造业中历史最悠久的企业之一，她的前身是协同和机器厂，始建于1911年，1915年她成功地制造出中国第一台柴油机。今天的广州柴油机厂股份有限公司已经发展成为中国华南地区最大的柴油机专业生产企业，具有批量生产柴油机的能力。

产品齐全 品质卓越

广州柴油机厂股份有限公司主要生产320、230、G32、KU30A等四种系列的中速柴油机，产品功率810kW~6000kW。柴油机具有运行稳定性和可靠性高，储备功率充足，低油耗，低排放，维护方便，运行成本低的特点，深受广大用户欢迎。

广州柴油机厂股份有限公司建立了严格的质量管理体系，获得了英国皇家认证协会（UKAS）颁发的质量管理体系认证证书，同时获得了CCS、BV、GL、NK、LR等多国船级社的工厂认可和产品认证证书。

广州柴油机厂股份有限公司生产的中速柴油机完全符合国际海事组织（IMO）规定的排放标准。

我司生产的各种中速柴油机广泛应用于各类船舶主、辅机，可配套遥控装置、推力轴承、各类联轴节及齿轮箱；可两端输出功率，带动各类工程机械；还可提供驾控台、集控台或监控台，并实现驾控、集控、机旁操作的三者相互转换，具有性能良好、报警功能齐全、操作方便等优点，适合各种客滚船、油船、散货船、集装箱船、拖轮、渔轮、疏浚工程船及海军舰船作主机或辅机动力之用。

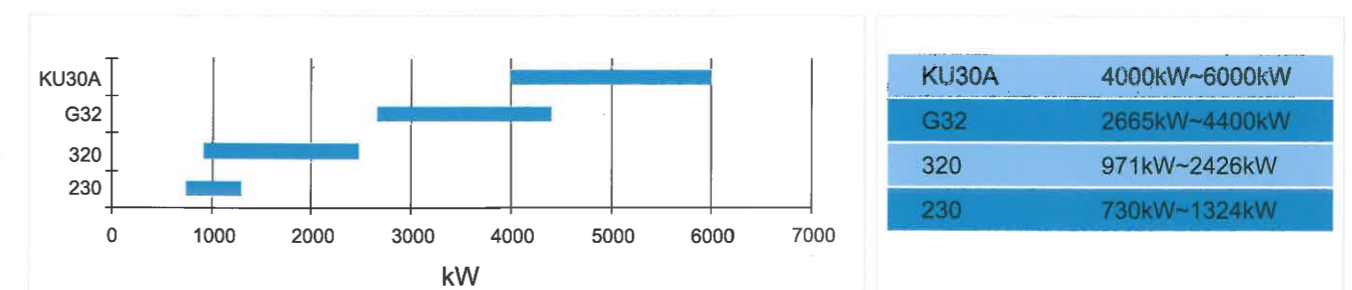
专业创造 品质超群

广州柴油机厂股份有限公司生产700kW~4180kW的各种规格柴油发电机组，是采用我司生产的柴油机配套优质的发电机和电控设备而组成，具有噪声低、油耗省，并网容易和可长时间运转的良好性能；带有应急装置的柴油发电机组还可实现供电的自动化，是用户理想的自备电站和发电厂可靠的保安备用电源。

我司生产320、230、G32、KU30A系列的各种规格船用主机及船、陆用中速柴油发电机组，可燃用运动粘度180厘沱/50°C、380厘沱/50°C或雷氏1号粘度1500秒/100°F、3500秒/100°F的重油。

G32型船用中速柴油机是与中船重工集团711研究所近年合作开发的新产品，产品技术结构和性能指标处于国内领先地位，达到本世纪初国际同类产品的先进水平。

柴油机功率范围 Power Range of Diesel Engines



创新发展 永不停步 Creation and development, keeping advancing

- 企业通过ISO9001质量管理体系认证
- The certificate of conformity of quality management system certification gained by the company



- 先进的设备——数控曲轴磨床
- Advanced Equipment-Numerical Control Crankshaft Grinding Machine



- 先进的设备——五面体加工中心
- Advanced Equipment-Machining Centre of Pentahedron



- 先进的设备——定梁龙门加工中心
- Advanced Equipment-Batching Gantry Machining Centre

广州柴油机厂股份有限公司是一家技术密集型企业，产品从设计、制造、测试到投放市场，是一项复杂的系统工程。

设计方面，我们积极与国内外著名的科研所合作，应用计算机PDM、CAD软件进行设计、研制新产品，持续加强新产品质量改进，使我们的新产品拥有较高的技术含量。

制造方面，我们拥有专业的生产线和先进的设备，从铸造、机加工到总装配，我们都严格执行工艺纪律，以工艺提升制造水平，打造企业竞争力。

测试方面，我们精密的测试仪器，运用先进的测试手段，保证产品的技术精度，突显我们的品牌优势。

Guangzhou Diesel Engine Factory Co.,Ltd is concentrated technology enterprise. The manufacturing product is a complex system engineering: design, manufacture, measuring, test and marketing.

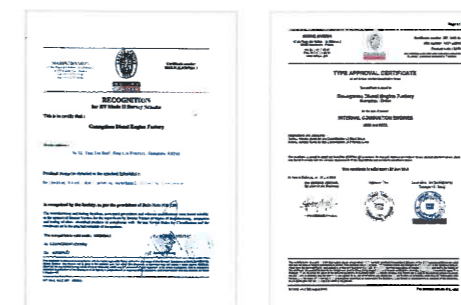
In design, We have cooperated with famous institution home and abroad to design the diesel engine by means of PDM and CAD software, and have been improving the quality of products continuously to make our product have high technical content.

In manufacture, We have special production line and advanced devices to make the enterprise own competitive power including casting, machine and assembly production line.

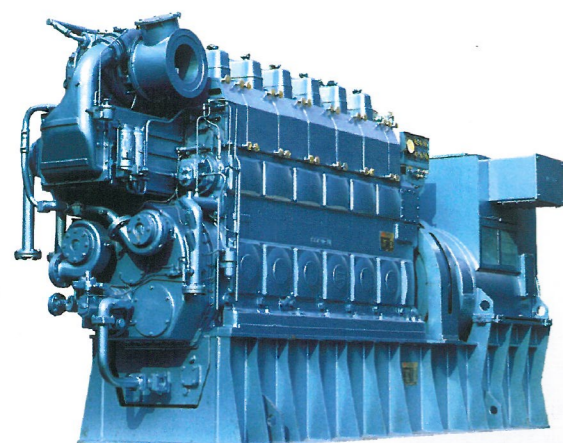
In measuring, We use precise testing instrument by means of advanced testing methods to guarantee the accuracy of product.



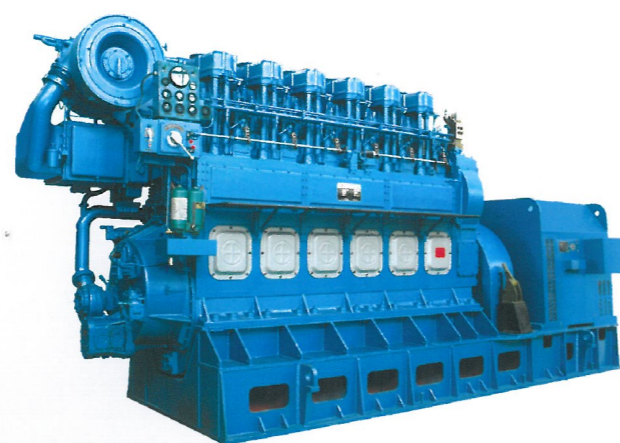
- 质量管理体系认证证书
- Certificate of conformity of quality management system certification
- 认证注册证书
- Certificate of registration



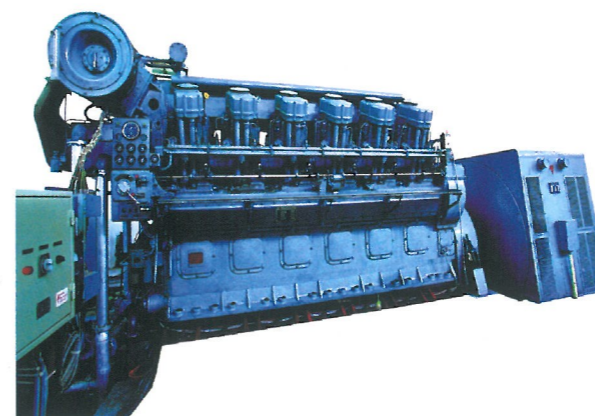
- BV对企业的认可
- RECOGNITION for BV Model II Survey Scheme
- BV型号认可证书
- TYPE APPROVAL CERTIFICATE



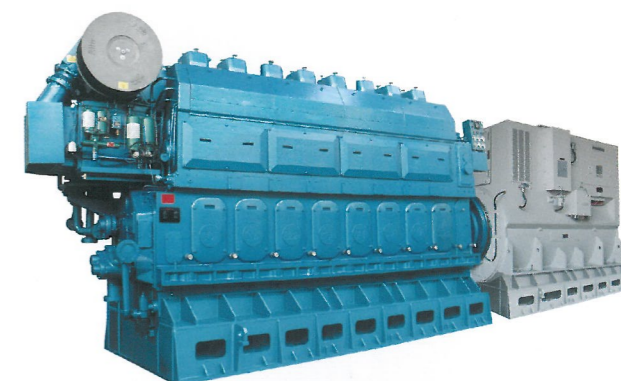
700kW | 230系列柴油(重油)发电机组
1000kW | 230 series diesel (HFO) generating sets



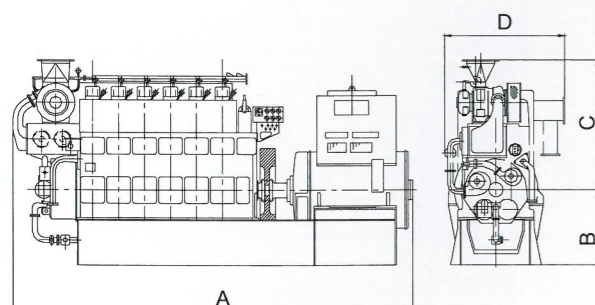
1000kW | 320系列柴油(重油)发电机组
1250kW | 320 series diesel (HFO) generating sets
1600kW



2000kW | 12V320型柴油(重油)发电机组
12V320 diesel (HFO) generating sets



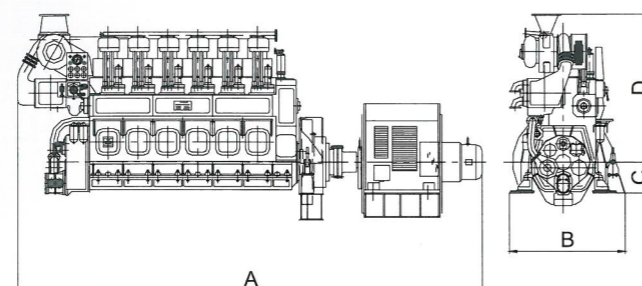
2500kW | G32系列柴油(重油)发电机组
2750kW | G32 series diesel (HFO) generating sets
3380kW
3700kW
4180kW



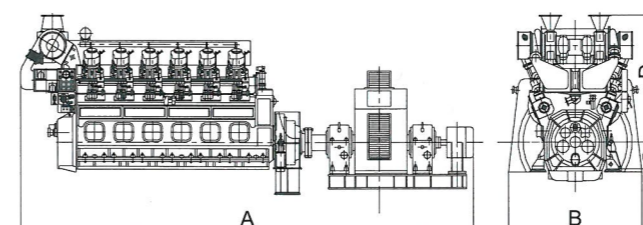
发电机组尺寸规格 Gen-sets. Complete (mm)					
发电机组型号 Model of Gen-sets.	A	B	C	D	T(kg)
GC700LA	5588	1115	1858	1794	18500
GC1000LA8	6629	890	1932	1634	23000

★ 注：采用不同型号的发电机，则机组外形尺寸会有所变化。

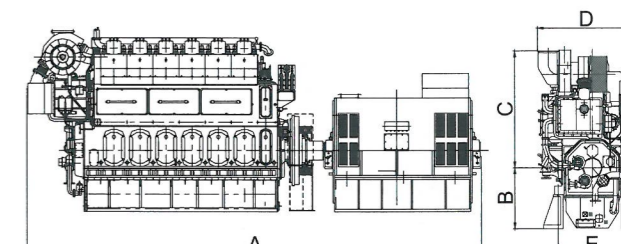
★ Note: The overall dimensions of the Gen-sets will be changed based on the different types of generators.



发电机组尺寸规格 Gen-sets. Complete (mm)					
发电机组型号 Model of Gen-sets.	A	B	C	D	T(kg)
GC1000LAH	7670	2290	500	2400	34000
GC1250LAH	8060	2290	500	2400	35000
GC1600LAH	9750	2300	705	2675	45000



发电机组尺寸规格 Gen-sets. Complete (mm)					
发电机组型号 Model of Gen-sets.	A	B	C	D	T(kg)
GC2000LAH	9750	3000	550	2635	64000



发电机组尺寸规格 Gen-sets. Complete (mm)						
发电机组型号 Model of Gen-sets.	A	B	C	D	E	T(kg)
GC2500LAH	9272	1250	2385	1986	1400	66000
GC2750LAH	9272	1250	2385	1986	1400	66000
GC3380LAH	10525	1250	2385	1986	1400	76300
GC3700LAH	10525	1250	2385	1986	1400	76300
GC4180LAH	10971	1250	2810	2455	1400	83000

700kW - 4180kW柴(重)油发电机组技术参数 Specification for Gen-sets operated on HFO from 700kW to 4180kW

项目/参数/机组型号 Item/Specifications/Model of Gen-sets.			GC700LA	GC1000LA8	GC1000LAH	GC1250LAH	GC1600LAH	GC2000LAH	GC2500LAH	GC2750LAH	GC3380LAH	GC3700LAH	GC4180LAH
发电机组基本参数 Specifications of Gen-sets.	柴油机型号	Engine model	6230ZD	8230ZD	6320ZD	6320ZD-2	8320ZD	12V320ZD	6G32	6G32A	8G32	8G32A	9G32
	额定功率	Rate output	kW	700	1000	1000	1250	1600	2000	2500	2750	3380	4180
	额定转速	Rated speed	r/min	750/720	750/720	428/450	500	500	428	600	600	600	600
	燃油消耗率	Specific fuel oil consumption	g/kW.h	192	192	196	196	198	205	185+5 %	185+5 %	185+5 %	185+5 %
	滑油消耗率	Specific lube oil consumption	g/kW.h	1	1	≤1.2	≤1.2	≤1.2	≤1.2	≤1	≤1	≤1	≤1
	噪声	Noise level (Measured one meter off)	dB(A)	100	100	100.42	101.14	102.85	103.11	103.6	103.4	106.8	106.7
	额定频率	Frequency	Hz	50/60	50/60	50/60	50	50	50	50/60	50/60	50/60	50/60

重油外围系统主要设备

HFO Peripheral System



性能特点

Performance Characteristics

供油单元是广州柴油机厂股份有限公司选用Alfa Laval公司的粘温控制系统(MK II)和板式加热器(CBM26)等组装而成,是保证重油进入柴油机的压力、粘度和温度的重要设备。单元可在重油和柴油间灵活切换,当常用泵组出现故障时,备用泵组可自动投入运行。该单元有使用方便、可靠、结构紧凑等优点。

The HFO supply unit made by GDF with the Viscosity-Temperature Control System (MK II) and final heater (CBM26) from Alfa Laval is the crucial equipment to ensure the right pressure, viscosity, temperature at the engine inlet. The unit can be switched between DO and HFO flexibly and the standby pump unit can be put into operation automatically when something happens to the normal pump unit. The unit has many features such as easy operation, reliable performance and compact construction, etc.

主要技术参数

Main Specification

供油单元型号 Model of supply unit	HFOE.04C.00	HFOE.03C.00
Alfa Laval 粘温控制系统 Alfa Laval viscosity-temperature control system	MK II	
供油量 Oil supply capacity m ³ /h	3	1.5
重油循环量 HFO circulation capacity m ³ /h	7.5	3
柴油输出压力 DFO output pressure MPa	0.2~0.3	
重油输出压力 HFO output pressure MPa	0.4~0.5(180cSt/50°C重油HFO) 0.45~0.55 (380cSt/50°C重油HFO)	
重油输出粘度 HFO output viscosity cSt	12~14	
加热介质 Heating media	蒸气或导热油 Steam or Heat conduction oil	
加热介质需求量 Required steam capacity	按型号配置 According to model of HFO supply unit	
长×宽×高 L×B×H mm	2300×1400×2282	2300×1400×1760
重量 Weight kg	1100	1065
适用油品 Applicable oil cSt/50°C	180HFO、380HFO	

重油外围系统主要设备

HFO Peripheral System



性能特点

Performance Characteristics

分离机模块是广州柴油机厂股份有限公司选用Alfa Laval公司的重油分离机、板式加热器(CBM26-40)和螺杆式供油泵等组装而成,是柴油机燃用重油时必不可少的设备。单元使用方便、可靠、减少现场大量的管路连接。

The HFO separating module made in GDF with the HFO separator, plate type heater (CBM26-40) and screw fuel oil supply pump from Alfa Laval, is indispensable for HFO operation of the engine. This unit has many features of easy operation, reliable performance, and reduction of on-the-spot pipeline connection, etc.

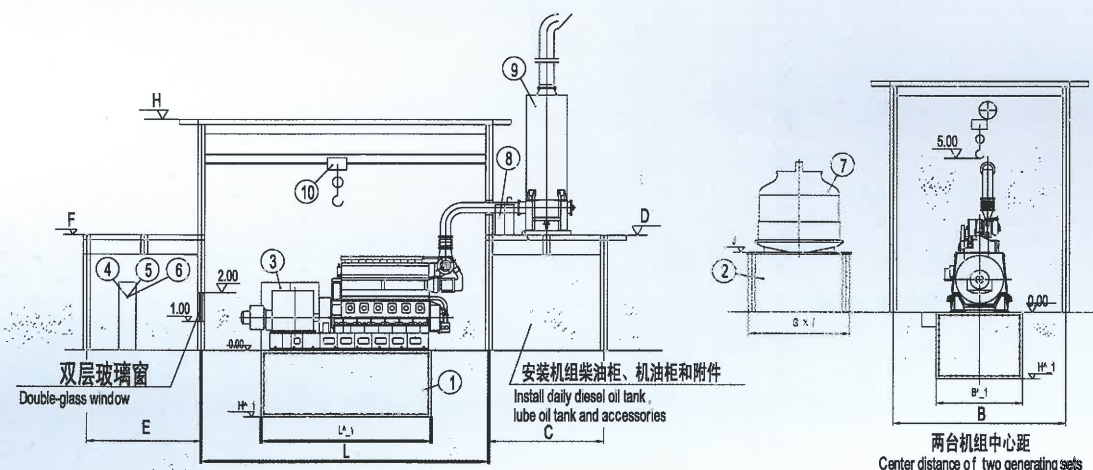
主要技术参数

Main Specification

分离机型号 Separator model		HFOE.01C.00A		HFOE.02C.00A		
Alfa Laval分离机型号 Alfa Laval separator model		PA615		PA605		
最大有效分离量 Max. capacity of effective separation		2200	1600	1300	950	
适用油品 Applicable oil		cSt/50℃	180HFO	380HFO	180HFO	380HFO
分离温度 Separation temperature		℃	98			
工作空气压力 Air operating pressure		MPa	0.5~0.7			
工作水压力 Water operating pressure		MPa	0.2~0.6			
加热介质 Heating media		蒸气 (Steam) 或导热油(Heat conduction oil)				
加热介质需求量 Required steam capacity		蒸气(Steam) 110kg/h 或导热油(Heat conduction oil)3m³/h		蒸气(Steam) 60kg/h 或导热油(Heat conduction oil)1.5m³/h		
长×宽×高 L×B×H		mm	1100×1000×1260			
重量 Weight		kg	1000			

700kW - 4180kW柴(重)油发电机组机房外形图

The overall dimension of power house layout from 700kW to 4180kW DO (HFO) diesel engine generating sets



- | | | |
|---|--------|-------------------------------|
| 1 | 机组基础 | Foundation of generating sets |
| 2 | 水池 | Water pool |
| 3 | 柴油发电机组 | Diesel generating sets |
| 4 | 控制励磁屏 | Control panel |
| 5 | 开关屏 | Switch panel |

- | | | |
|----|--------|----------------------|
| 6 | 厂用配电屏 | Distribution panels |
| 7 | 冷却塔 | Cooling tower |
| 8 | 膨胀水箱 | Expansion water tank |
| 9 | 锅炉或消音器 | Boiler or silencer |
| 10 | 吊车 | Crane |

单台标准机房尺寸

Dimension for single standard engine house

机组型号 Model of Gen-sets	柴油机型号 Engine type	机房尺寸 mm Engine house dimension L×B×H (长Length ×宽Width×高Height)	基础尺寸 mm Foundation dimension L ₁ ×B ₁ ×H ₁ (长Length ×宽Width×高Height)	副跨尺寸 mm Auxiliary span dimension C×D (宽Width×高Height)	电房尺寸 mm Electric power house dimension E×F (宽Width×高Height)	水池尺寸 mm Water basin dimension G×I×J (长Length ×宽Width×高Height)
GC700LA	6230ZD	10000×6000×6000	5500×2500×1500	4000×4000	8000×3500	3000×3500×2000
GC1000LA8	8230ZD	11000×6000×10000	6900×2500×1500	4000×4000		3500×3500×2000
GC1000LAH	6320ZD	13500×5000×7000	6000×3000×2300	4000×4000		V≥200m ³ , h≥1m
GC1250LAH	6320ZD-2	13500×5000×7000	7300×3000×2050	4000×4000		V≥200m ³ , h≥1m
GC1600LAH	8320ZD	16500×6000×7000	8800×3800×2600	5000×4000		V≥250m ³ , h≥1.5m
GC2000LAH	12V320ZD	18000×6500×9000	8000×4300×3000	6500×4000		V≥350m ³ , h≥1m
GC2500LAH	6G32	16500×6500×9000	8500×3800×2200	5000×4800		V≥800m ³ , h≥1.5m
GC2750LAH	6G32A	16500×6500×9000	8500×3800×2200	5000×4800		V≥800m ³ , h≥1.5m
GC3380LAH	8G32	17500×6500×9000	9350×3800×2200	5000×4800		V≥900m ³ , h≥1.5m
GC3700LAH	8G32A	17500×6500×9000	9350×3800×2200	5000×4800		V≥900m ³ , h≥1.5m

部分采用我司产品的用户机房

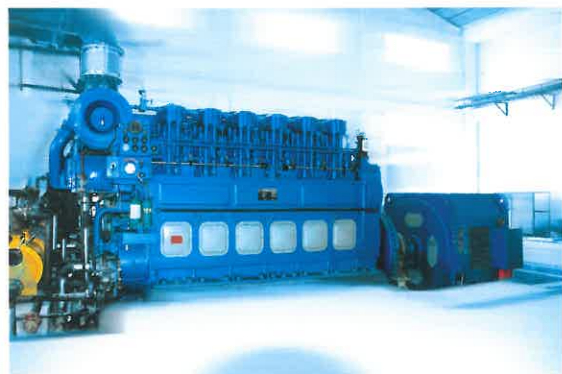
Power house layout of diesel generating set from the users



某大型家电企业发电机房采用我司500kW×12柴油发电机组群
The installation with the group of 500kW×12 diesel generating sets from Guangzhou Diesel Engine Factory Co.,Ltd.



某大型企业发电机房采用我司1000kW×5重油发电机组群
The installation with the group of 1000kW× 5HFO diesel generating sets from Guangzhou Diesel Engine Factory Co.,Ltd.



某大型生产企业发电机房采用我司1250kW柴油发电机组
The installation with 1250kW diesel generating sets from Guangzhou Diesel Engine Factory Co.,Ltd.



某大型集团发电机房采用我司2000kW×8重油发电机组群
The installation with the group of 2000kW× 8 HFO diesel generating sets from Guangzhou Diesel Engine Factory Co.,Ltd.

广州柴油机厂股份有限公司 (原广州柴油机厂)

GUANGZHOU DIESEL ENGINE FACTORY CO., LTD (FORMERLY KNOWN AS GUANGZHOU DIESEL ENGINE FACTORY)

地址: 广州市芳村大道东73号 PC: 510371 网址: www.gdfdiesel.com.cn

Address: No.73, East, Fangcun Road, Guangzhou, China.

电话(Tel): 0086-20-81891619 传真(Fax): 0086-20-81892297

销售机构: 广州协同和柴油机销售有限公司

SALES ORGANIZATION: GUANGZHOU XIETONGHE DIESEL ENGINE SALES CO., LTD.

地址: 广州市芳村大道东148号 PC: 510370 Email: gdefsd@21cn.com

Address: No.148, East, Fangcun Road, Guangzhou, China.

电话(Tel): 0086-20-81585010/81585014 传真(Fax): 0086-20-81584154

上海办事处: 上海市徐汇区零陵路791弄上影广场三号楼504室 邮编: 200030

Shanghai Office: Room 504, Building 3, Shangying Square, NO.791, Lingling Road, Xuhui District, Shanghai.

电话(Tel): 0086-21-63262672/34613971 传真(Fax): 0086-21-34613971

武汉办事处: 武汉市操场角6号汉华花园商住楼B座15楼4号

Wuhan Office: No.4 Room, 15th Floor, B Block, Commerce & Residence Building,

Hanhua Garden, 6 Caochang Jiao, Hankou, Wuhan, China.

电话(Tel): 0086-27-83766435 传真(Fax): 0086-27-83766435

越南海防办事处:

Hai Phong Office: Number 38, Lot 6, Pham Phu Str, Hai Phong City, Vietnam.

电话(Tel): 0084-31-3533119 传真(Fax): 0084-31-3533119

服务网点:

SERVICE NETWORKING

技术支持: 广州市芳村大道东73号

Technical Support: No.73, East, Fangcun Road, Guangzhou.

电话(Tel): 0086-20-81689720 传真(Fax): 0086-20-81689720

工程部: 广州市芳村大道东73号

After-sales Department: No.73, East, Fangcun Road, Guangzhou.

电话(Tel): 0086-20-81573791 传真(Fax): 0086-20-81573791

配件销售: 广州市芳村大道东73号

Spare Parts Sale: No.73, East, Fangcun Road, Guangzhou.

电话(Tel): 0086-20-81801008 传真(Fax): 0086-20-81596792

泉州服务中心: 福建省泉州市坪山路碧水湾2B-02号

Quanzhou Service Centre: No. 2B-02, Bishuiwan, Pingshan Road, Quanzhou City, China.

电话(Tel): 0086-595-22987366

宁波服务分部: 宁波市江东区中兴路197号

Ningbo Service Branch: No. 197, Zhongxing Road, Jiangdong District, Ningbo City, China.

电话(Tel): 0086-574-87773823 传真(Fax): 0086-574-87773823

大连特约维修服务中心: 大连市中山区上海路3号上影大厦2207室

Dalian Special Maintenance Service Centre: 2207 Room, Shangying Building,

No.3 Shanghai Road, Zhongshan District, Dalian City.

电话(Tel): 0411-82800955 传真(Fax): 0411-82800958

南京办事处: 南京市雨花南路51-26号 (君悦城市花园)

Nanjing Office: No.51-26, South, Yuhua Road, Nanjing City.(Junyue City Garden)

电话(Tel): 025-52489518 传真(Fax): 025-52489518

天津办事处: 天津市塘沽区新港三号路紫云国际小区9栋2-402

Tianjin Office: No.2-402 Room, 9 Block, Ziyun International Garden,

塘沽区, Tianjin City, China.



XMH

YOUR CONNECTION
TO THE RIGHT MACHINE

XIN MING HUA PTE LTD
XMH ENGINEERING PTE LTD
No. 44 Sungei Kadut Avenue
Singapore 729667

Tel : (65) 6368 0188
Fax : (65) 6368 0633
Email : sales@engine.com.sg
Website : www.xmh.com.sg



40 Indonesia
hoo.com